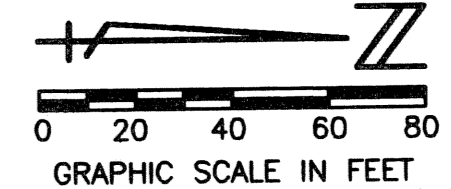


# MIRASOL PARCEL TWENTY-TWO

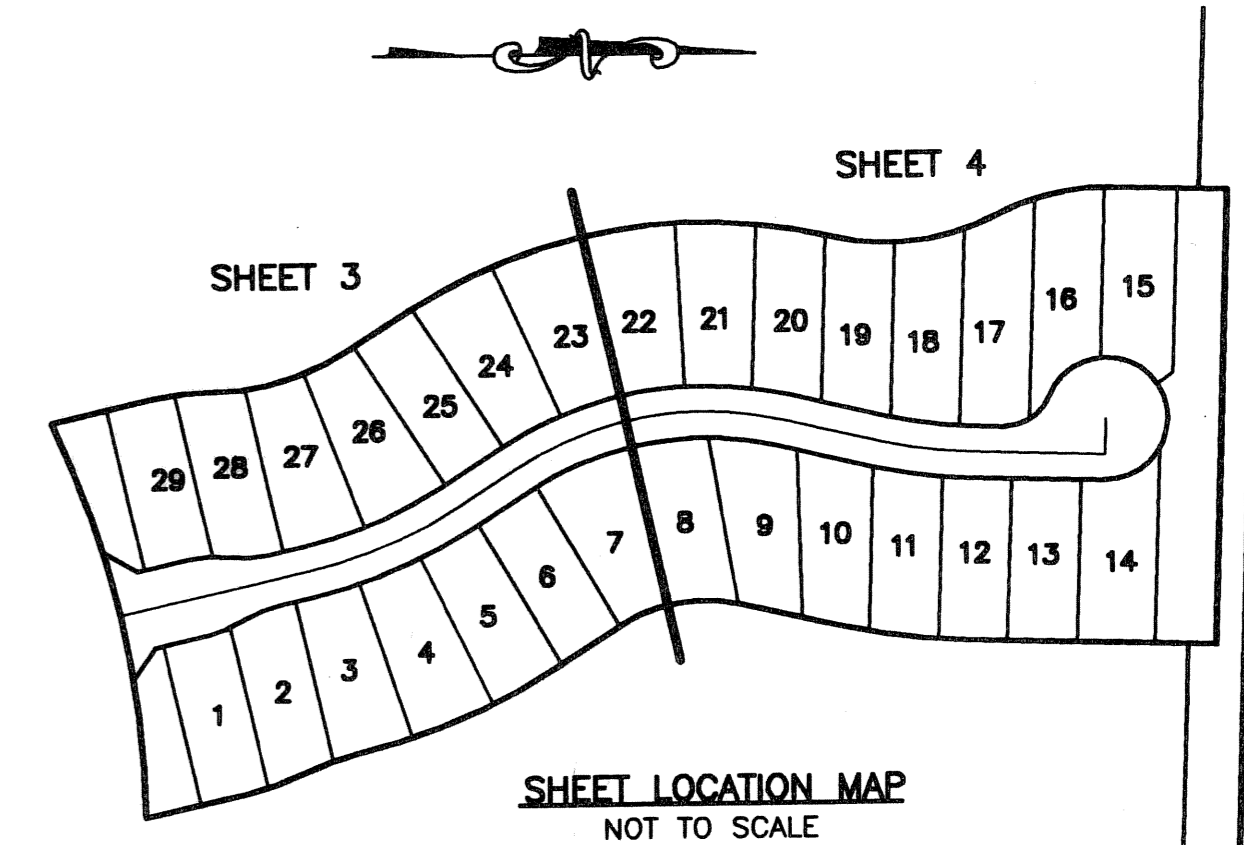
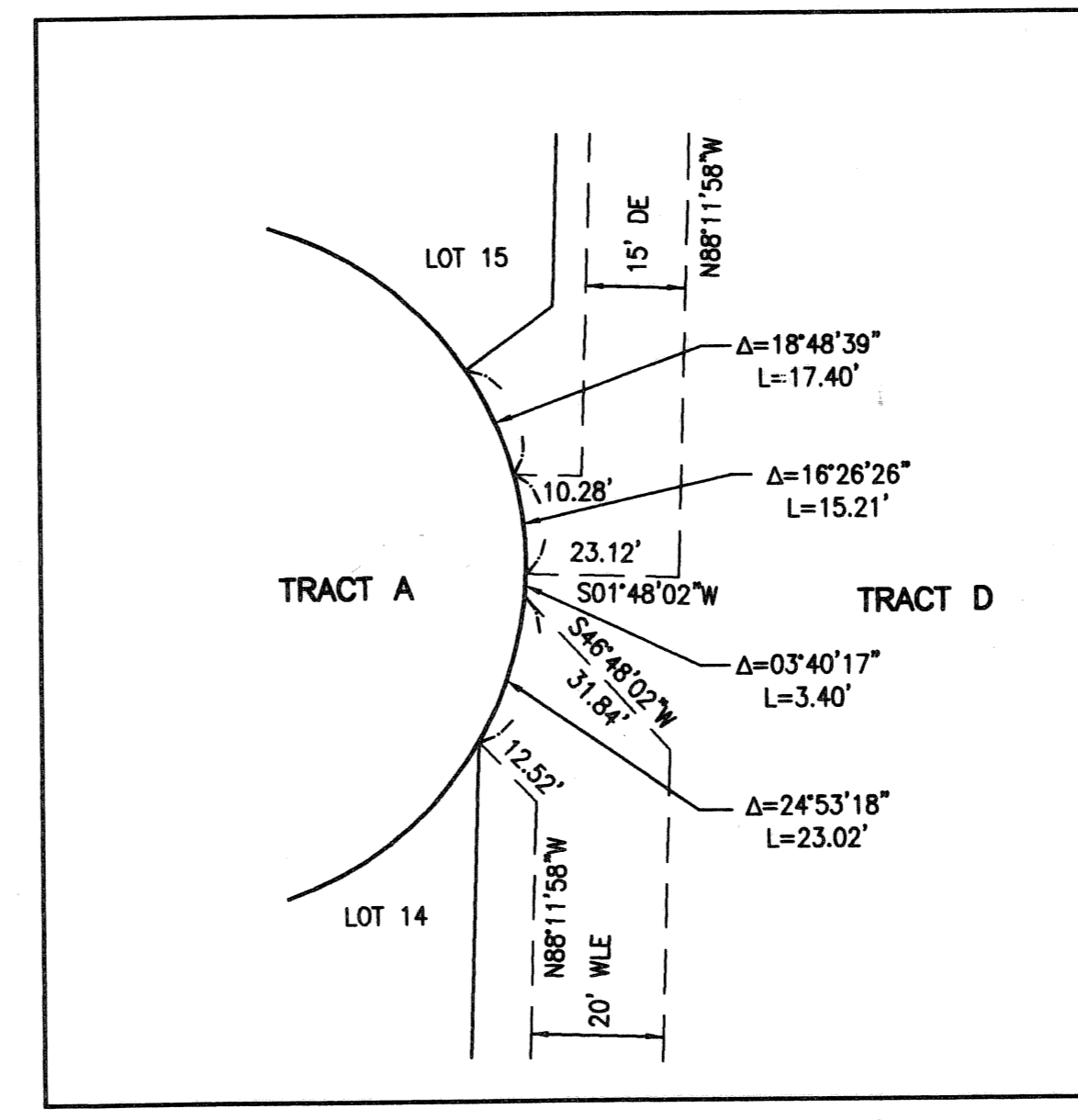
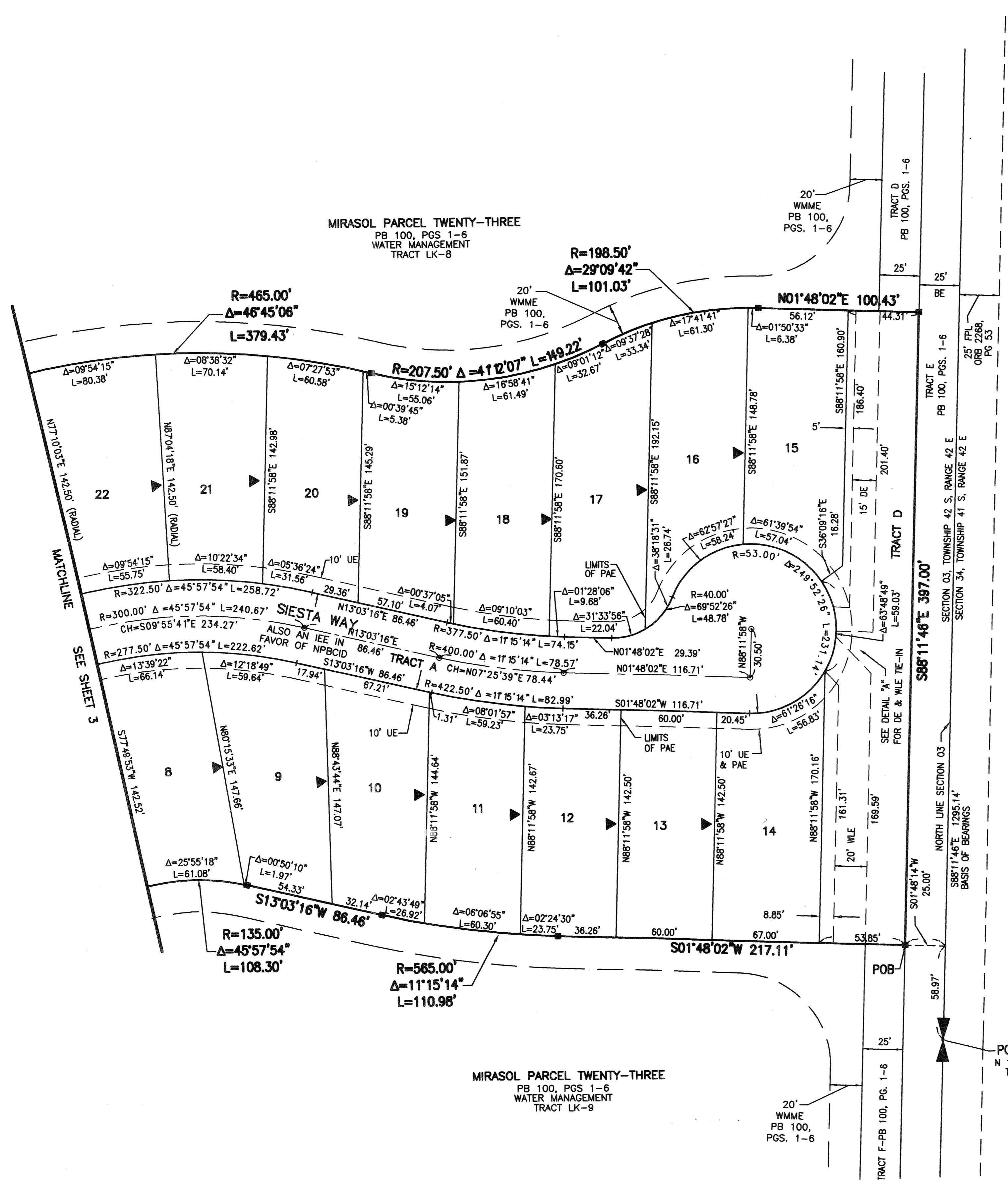
PART OF MIRASOL P.C.D.  
BEING IN SECTION 03, TOWNSHIP 42 SOUTH, RANGE 42 EAST,  
CITY OF PALM BEACH GARDENS,  
PALM BEACH COUNTY, FLORIDA  
SHEET 4 OF 4

130

STATE OF FLORIDA  
COUNTY OF PALM BEACH  
THIS PLAT WAS FILED FOR  
RECORD \_\_\_\_\_ DAY OF \_\_\_\_\_  
AD, 2005 AND DULY RECORDED  
IN PLAT BOOK \_\_\_\_\_ ON PAGES  
\_\_\_\_\_ AND \_\_\_\_\_  
SHARON R. BOCK,  
CLERK & COMPTROLLER  
BY: \_\_\_\_\_, D.C.



CIRCUIT COURT SEAL



- LEGEND**
- Δ CENTRAL (DELTA) ANGLE
  - CH CHORD BEARING AND DISTANCE
  - DE DRAINAGE EASEMENT
  - IEE INGRESS-EGRESS EASEMENT
  - L ARC LENGTH
  - NPBCID NORTHERN PALM BEACH COUNTY IMPROVEMENT DISTRICT
  - ORB OFFICIAL RECORD BOOK
  - PAE PEDESTRIAN ACCESS EASEMENT
  - PB PLAT BOOK
  - PCD PLANNED COMMUNITY DEVELOPMENT
  - PG(S) PAGE(S)
  - R RADIUS
  - SLE SEWER LINE EASEMENT
  - UE UTILITY EASEMENT
  - WLE WATER LINE EASEMENT
  - WMME WATER MANAGEMENT MAINTENANCE EASEMENT
  - PERMANENT REFERENCE MONUMENT FOUND LB 048 (4"x4" CONCRETE)
  - PERMANENT REFERENCE MONUMENT SET LB 048 (4"x4" CONCRETE)
  - PERMANENT CONTROL POINT SET LB 048
  - ⊙ CENTERLINE
  - ⊕ SECTION QUARTER CORNER

THIS INSTRUMENT WAS PREPARED BY MANUEL A. GUTIERREZ, P.S.M. IN THE OFFICES OF MOCK, ROOS & ASSOCIATES, INC., 5720 CORPORATE WAY, WEST PALM BEACH, FLORIDA 33407.

SCALE:  
1"=40'  
P.A. NO.:  
99379.00  
DATE:  
JULY 2004  
DRAWING NO.  
42-42-03-139

**MOCK • ROOS**  
ENGINEERS • SURVEYORS • PLANNERS  
5720 Corporate Way, West Palm Beach, Florida 33407  
(561) 683-3113, fax 478-7248

**MIRASOL PARCEL TWENTY-TWO**  
PART OF MIRASOL P.C.D.  
BEING IN SECTION 03,  
TOWNSHIP 42 SOUTH, RANGE 42 EAST,  
CITY OF PALM BEACH GARDENS,  
PALM BEACH COUNTY, FLORIDA

SHEET 4 OF 4

REVISED: 05-02-05  
CADD FILE:  
S:\proj\topop22\topop22.dwg  
p22top22.dwg